

IL-3R β (F587) polyclonal antibody

Catalog: BS1185

Host: Rabbit

Reactivity: Human, Mouse, Rat

BackGround:

Interleukin-3, or IL-3, is a pleiotropic cytokine that is primarily secreted by activated T lymphocytes and stimulates the proliferation and differentiation of hematopoietic cells. IL-3 exerts its biological effects through a receptor which consists of a ligand-specific α subunit (IL-3R α) and a signal transducing β subunit (IL-3R β) common to the IL-3/IL-5/GM-CSF receptors. The α subunits are low-affinity ligand-binding proteins while the β subunits do not themselves bind ligand, but are required for high affinity binding by the α subunits. The mouse IL-3 receptor has two distinct β subunits, one that functions only in IL-3-mediated cell signaling and a second that is shared with IL-5 and GM-CSF. The murine β subunits are 91% homologous at the amino acid level but only 56% homologous to the human β subunit.

Product:

1 mg/ml in Phosphate buffered saline (PBS) with 0.05% sodium azide, approx. pH 7.2.

Molecular Weight:

~ 130 kDa

Swiss-Prot:

P32927

Purification&Purity:

The antibody was affinity-purified from rabbit antiserum by affinity-chromatography using epitope-specific im-

munogen and the purity is > 95% (by SDS-PAGE).

Applications:

IHC: 1:50~1:200

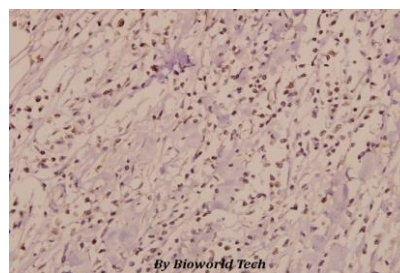
Storage&Stability:

Store at 4 °C short term. Aliquot and store at -20 °C long term. Avoid freeze-thaw cycles.

Specificity:

IL-3R (F587) polyclonal antibody detects endogenous levels of IL-3R protein.

DATA:



Immunohistochemistry (IHC) analyzes of IL-3R β (F587) pAb in paraffin-embedded human breast carcinoma tissue at 1:50.

Note:

For research use only, not for use in diagnostic procedure.

Bioworld Technology, Inc.

Add: 1660 South Highway 100, Suite 500 St. Louis Park, MN 55416, USA.

Email: info@bioworld.com

Tel: 6123263284

Fax: 6122933841

Bioworld technology, co. Ltd.

Add: No 9, weidi road Qixia District Nanjing, 210046, P. R. China.

Email: info@biogot.com

Tel: 0086-025-68037686

Fax: 0086-025-68035151