

Neuregulin-1/SMDF (Y4) polyclonal antibody

Catalog: BS1173

Host: Rabbit

Reactivity: Human, Mouse, Rat

BackGround:

The neuregulins are a family of ErbB/HER ligands encoded by four genes. Neuregulin-1 gene, NRG1, encodes numerous splice variants with differing transcription initiation sites. Neuregulin-1 includes a range of isoforms with varying glycosylation, regulation of expression and function. Neuregulin-1 splice variants each bear an EGF-like domain, though otherwise have unique domain structures, differing functions and discrete tissue distribution. Six types of Neuregulin-1 isoform groups have been defined based on their structural features. Three types are most often described, type I (ARIA, NDF or HRG), type II (GGF) and type III (SMDF). Neuregulin-1 has been linked to schizophrenia and has diverse neural functions. Neuregulin-1 affects cell migration, the differentiation of neural crest and Schwann cells, and acts to upregulate the expression of acetylcholine receptors at muscle fibers during the formation of neuromuscular junctions.

Product:

1 mg/ml in Phosphate buffered saline (PBS) with 0.05% sodium azide, approx. pH 7.2.

Molecular Weight:

~ 44 kDa

Swiss-Prot:

Q15491

Purification&Purity:

The antibody was affinity-purified from rabbit antiserum by affinity-chromatography using epitope-specific immunogen and the purity is > 95% (by SDS-PAGE).

Applications:

WB: 1:500~1:1000

IHC: 1:50~1:200

IF: 1:50~1:200

Storage&Stability:

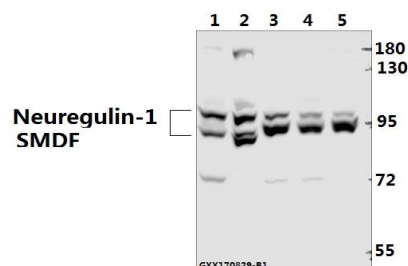
Store at 4 °C short term. Aliquot and store at -20 °C long

term. Avoid freeze-thaw cycles.

Specificity:

SMDF/Neuregulin 1 (Y4) polyclonal antibody detects endogenous levels of SMDF/Neuregulin 1 protein.

DATA:



Western blot (WB) analysis of Neuregulin-1 SMDF (Y4) pAb at 1:1000 dilution

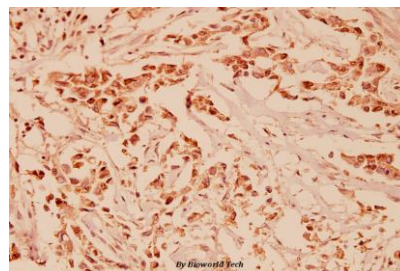
Lane1:PC12 whole cell lysate(40ug)

Lane2:CT26 whole cell lysate(40ug)

Lane3:PC3 whole cell lysate(40ug)

Lane4:SK-OVCAR3 whole cell lysate(40ug)

Lane5:MCF-7 whole cell lysate(40ug)



Immunohistochemistry (IHC) analyzes of Neuregulin-1/SMDF (Y4) pAb in paraffin-embedded human breast carcinoma tissue at 1:100.

Note:

For research use only, not for use in diagnostic procedure.

Bioworld Technology, Inc.

Add: 1660 South Highway 100, Suite 500 St. Louis Park, MN 55416, USA.

Email: info@bioworld.com

Tel: 6123263284

Fax: 6122933841

Bioworld technology, co. Ltd.

Add: No 9, weidi road Qixia District Nanjing, 210046, P. R. China.

Email: info@biogot.com

Tel: 0086-025-68037686

Fax: 0086-025-68035151