

CSE1L (E2) polyclonal antibody

Catalog: BS1080

Host: Rabbit

Reactivity: Human, Mouse, Rat

BackGround:

Normal tissues are characterized by a balance between cellular stasis, cell proliferation, cell differentiation and cell death. Aberrant regulation of any of these cell processes can result in cancer. Cell death during embryogenesis, tissue atrophy and normal tissue turnover is called apoptosis. This is characterized by cytoplasmic and nuclear condensation, nuclear disorganization and fragmentation of genomic DNA into 180-200 base pair oligomers. Several human cDNA fragments have been shown to render MCF-7 cells resistant to cell death induced by Pseudomonas exotoxin, Pseudomonas exotoxin-derived immunotoxins, diphtheria toxin and tumor necrosis factor (TNF). One such fragment has proven to be the human homolog to the yeast chromosome segregation homolog, CSE1. Cloning of the full-length human cDNA has revealed a putative protein designated CAS, for cellular apoptosis susceptibility, that is 971 amino acids in length with 59% overall sequence homology as compared to yeast CSE1. CAS is highly expressed in testis and fetal liver.

Product:

1 mg/ml in Phosphate buffered saline (PBS) with 0.05% sodium azide, approx. pH 7.2.

Molecular Weight:

~ 110 kDa

Swiss-Prot:

P55060

Purification&Purity:

The antibody was affinity-purified from rabbit antiserum by affinity-chromatography using epitope-specific immunogen and the purity is > 95% (by SDS-PAGE).

Applications:

WB: 1:500~1:1000

IHC: 1:50~1:200

IP: 1:50~1:200

IF: 1:50~1:200

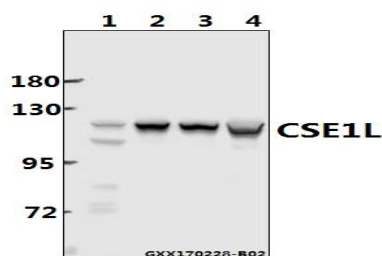
Storage&Stability:

Store at 4 °C short term. Aliquot and store at -20 °C long term. Avoid freeze-thaw cycles.

Specificity:

CSE1L (E2) polyclonal antibody detects endogenous levels of Exportin-2 protein.

DATA:



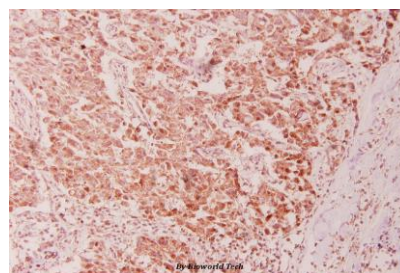
Western blot (WB) analysis of CSE1L (E2) polyclonal antibody at 1:500 dilution

Lane1:HepG2 whole cell lysate(40ug)

Lane2:SGC7901 whole cell lysate(40ug)

Lane3:CT26 whole cell lysate(40ug)

Lane4:PC12 whole cell lysate(40ug)



Immunohistochemistry (IHC) analyzes of CSE1L (E2) pAb in paraffin-embedded human breast carcinoma tissue at 1:100.

Note:

For research use only, not for use in diagnostic procedure.

Bioworld Technology, Inc.

Add: 1660 South Highway 100, Suite 500 St. Louis Park, MN 55416, USA.

Email: info@bioworld.com

Tel: 6123263284

Fax: 6122933841

Bioworld technology, co. Ltd.

Add: No 9, weidi road Qixia District Nanjing, 210046, P. R. China.

Email: info@biogot.com

Tel: 0086-025-68037686

Fax: 0086-025-68035151



PRODUCT DATA SHEET

Bioworld Technology, Inc.

Bioworld Technology, Inc.

Add: 1660 South Highway 100, Suite 500 St. Louis Park,
MN 55416, USA.

Email: info@bioworld.com

Tel: 6123263284

Fax: 6122933841

Bioworld technology, co. Ltd.

Add: No 9, weidi road Qixia District Nanjing, 210046,
P. R. China.

Email: info@biogot.com

Tel: 0086-025-68037686

Fax: 0086-025-68035151