

## Catenin-γ (731) polyclonal antibody

Catalog: BS1042

Host: Rabbit

Reactivity: Human, Mouse, Rat

### BackGround:

The catenins,  $\alpha$ ,  $\beta$  and  $\gamma$ , are proteins which bind to the highly conserved, intracellular cytoplasmic tail of E-cadherin. Together, the catenin/cadherin complexes play an important role mediating cellular adhesion.  $\alpha$ -catenin was initially described as an E-cadherin associated protein, and since has been shown to associate with other members of the cadherin family, such as N-cadherin and P-cadherin.  $\beta$ -catenin associates with the cytoplasmic portion of E-cadherin, which is necessary for the function of E-cadherin as an adhesion molecule.  $\beta$ -catenin has also been found in complexes with the tumor suppressor protein APC.  $\gamma$ -catenin, also known as plakoglobin, binds with  $\alpha$ -catenin and N-cadherin. It has been shown that the transmembrane phosphatase PTP $\mu$  associates with catenin/cadherin complexes and may regulate complex signaling.

### Product:

1 mg/ml in Phosphate buffered saline (PBS) with 0.05% sodium azide, approx. pH 7.2.

### Molecular Weight:

~ 82 kDa

### Swiss-Prot:

P14923

### Purification&Purity:

The antibody was affinity-purified from rabbit antiserum by affinity-chromatography using epitope-specific immunogen and the purity is > 95% (by SDS-PAGE).

### Applications:

WB: 1:500~1:1000

IHC: 1:50~1:200

IF: 1:50~1:200

### Storage&Stability:

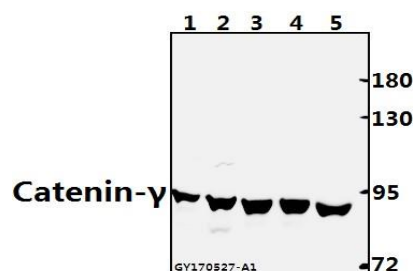
Store at 4 °C short term. Aliquot and store at -20 °C long

term. Avoid freeze-thaw cycles.

### Specificity:

Catenin-γ (731) polyclonal antibody detects endogenous levels of Catenin-γ protein.

### DATA:



Western blot (WB) analysis of Catenin-γ (731) polyclonal antibody at 1:500 dilution

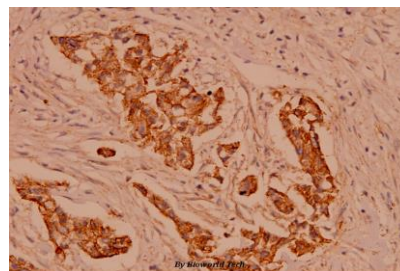
Lane1: AML-12 whole cell lysate(40ug)

Lane2: PC12 whole cell lysate(40ug)

Lane3: A549 whole cell lysate(40ug)

Lane4: H1792 whole cell lysate(40ug)

Lane5: HEK293T whole cell lysate(40ug)



Immunohistochemistry (IHC) analyzes of Catenin-γ (731) pAb in paraffin-embedded human breast carcinoma tissue at 1:100.

### Note:

For research use only, not for use in diagnostic procedure.

### Bioworld Technology, Inc.

Add: 1660 South Highway 100, Suite 500 St. Louis Park, MN 55416, USA.

Email: [info@bioworld.com](mailto:info@bioworld.com)

Tel: 6123263284

Fax: 6122933841

### Bioworld technology, co. Ltd.

Add: No 9, weidi road Qixia District Nanjing, 210046, P. R. China.

Email: [info@biogol.com](mailto:info@biogol.com)

Tel: 0086-025-68037686

Fax: 0086-025-68035151