

Caspase 10 (K442) polyclonal antibody

Catalog: BS1039

Host: Rabbit

Reactivity: Human, Mouse, Rat

BackGround:

Four isoforms of caspase 10 (caspase 10a, 10b, 10c, and 10d) having the same prodomain but different mature large and small subdomain, have been described. Caspase 10 contains two death domains (DED) involved in linking to the death effector domain of the adapter protein FADD and recruiting the complex to TNFR1 and Fas. The inactive procaspase 10 is variably expressed in many tissues and cell lines as a cytosolic protein. The mature form of caspase 10 comprises two subunits, p23/p17 (splice isoforms) and p12. Interestingly, a caspase 9- dependent processing of caspase 10 by caspase 6 in cell-free extracts has recently been suggested. Caspase 10 can cleave and activate caspases 3, 4, 6, 7, 8, and 9. This is followed by cleavage of numerous key proteins, including the nuclear protein PARP.

Product:

1 mg/ml in Phosphate buffered saline (PBS) with 0.05% sodium azide, approx. pH 7.2.

Molecular Weight:

~ 59 kDa

Swiss-Prot:

Q92851

Purification&Purity:

The antibody was affinity-purified from rabbit antiserum by affinity-chromatography using epitope-specific im-

munogen and the purity is > 95% (by SDS-PAGE).

Applications:

IHC: 1:50~1:200

IF: 1:50~1:200

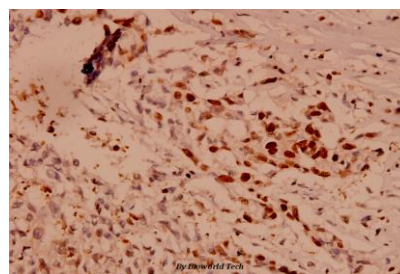
Storage&Stability:

Store at 4 °C short term. Aliquot and store at -20 °C long term. Avoid freeze-thaw cycles.

Specificity:

Caspase 10 (K442) polyclonal antibody detects endogenous levels of Caspase 10 protein.

DATA:



Immunohistochemistry (IHC) analyzes of Caspase 10 (K442) pAb in paraffin-embedded human breast carcinoma tissue at 1:100.

Note:

For research use only, not for use in diagnostic procedure.

Bioworld Technology, Inc.

Add: 1660 South Highway 100, Suite 500 St. Louis Park, MN 55416, USA.

Email: info@bioworld.com

Tel: 6123263284

Fax: 6122933841

Bioworld technology, co. Ltd.

Add: No 9, weidi road Qixia District Nanjing, 210046, P. R. China.

Email: info@biogot.com

Tel: 0086-025-68037686

Fax: 0086-025-68035151