

## CARD6 (A2) polyclonal antibody

Catalog: BS1038

Host: Rabbit

Reactivity: Human

### BackGround:

Membrane-associated guanylate kinase (MAGUK) family members localize to the plasma membrane and function as molecular scaffolds for the assembly of multi-protein complexes. The MAGUK family includes several mammalian proteins related to the Drosophila tumor suppressor discs-large (dlg) gene product, such as postsynaptic proteins, GKAPs, the tight junction associated proteins (ZO-1-3) and the caspase-associated recruitment domain (CARD) proteins, CARD 6, CARD 8-12 and CARD 14. CARD 6 is a 311 amino acid protein that associates with microtubules and acts as a selective mediator of NFκB activation. CARD 6 is structurally and functionally related to the superfamily of interferon (IFN)-inducible GTPases, a group that comprises host defense proteins which mediate cell-autonomous immunity. RICK, the receptor-interacting protein (RIP)-like interacting caspase-like apoptosis regulatory protein kinase, interacts with CARD 6 and targets it to aggresomes, regions of the cell where protein aggregates collect.

### Product:

1 mg/ml in Phosphate buffered saline (PBS) with 0.05% sodium azide, approx. pH 7.2.

### Molecular Weight:

~ 116 kDa

### Swiss-Prot:

Q9BX69

### Purification&Purity:

The antibody was affinity-purified from rabbit antiserum

by affinity-chromatography using epitope-specific immunogen and the purity is > 95% (by SDS-PAGE).

### Applications:

IHC: 1:50~1:200

IF: 1:50~1:200

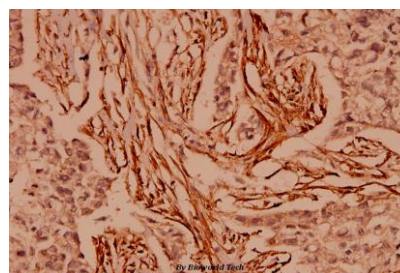
### Storage&Stability:

Store at 4 °C short term. Aliquot and store at -20 °C long term. Avoid freeze-thaw cycles.

### Specificity:

CARD6/CINCIN1 (A2) polyclonal antibody detects endogenous levels of CARD6/CIN protein.

### DATA:



Immunohistochemistry (IHC) analyzes of CARD6 (A2) pAb in paraffin-embedded human breast carcinoma tissue at 1:100.

### Note:

For research use only, not for use in diagnostic procedure.

### Bioworld Technology, Inc.

Add: 1660 South Highway 100, Suite 500 St. Louis Park, MN 55416, USA.

Email: [info@bioworld.com](mailto:info@bioworld.com)

Tel: 6123263284

Fax: 6122933841

### Bioworld technology, co. Ltd.

Add: No 9, weidi road Qixia District Nanjing, 210046, P. R. China.

Email: [info@biogot.com](mailto:info@biogot.com)

Tel: 0086-025-68037686

Fax: 0086-025-68035151