

Bax (S4) polyclonal antibody

Catalog: BS1030

Host: Rabbit

Reactivity: Human, Mouse, Rat

BackGround:

The Bcl-2 gene was isolated at the chromosomal breakpoint of t-bearing follicular B cell lymphomas. Bcl-2 blocks cell death following a variety of stimuli and confers a death-sparing effect to certain hematopoietic cell lines following growth factor withdrawal. Bcl-2 is localized to outer mitochondrial membranes and endoplasmic reticulum as well as nuclear membranes. A related protein, designated Bax p21 (for Bcl-associated X protein), has extensive amino acid homology with Bcl-2 and both homodimerizes and forms heterodimers with Bcl-2. Overexpression of Bax accelerates apoptotic death induced by cytokine deprivation in an IL-3 dependent cell line, and Bax also counters the death repressor activity of Bcl-2.

Product:

1 mg/ml in Phosphate buffered saline (PBS) with 0.05% sodium azide, approx. pH 7.2.

Molecular Weight:

~ 21 kDa

Swiss-Prot:

Q07812

Purification&Purity:

The antibody was affinity-purified from rabbit antiserum by affinity-chromatography using epitope-specific immunogen and the purity is > 95% (by SDS-PAGE).

Applications:

WB: 1:500~1:1000

IHC: 1:50~1:200

IP: 1:50~1:200

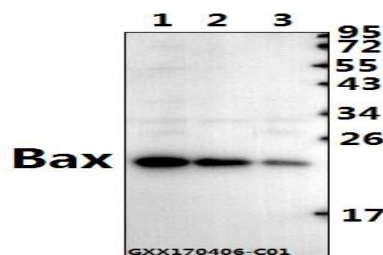
Storage&Stability:

Store at 4 °C short term. Aliquot and store at -20 °C long term. Avoid freeze-thaw cycles.

Specificity:

Bax (S4) polyclonal antibody detects endogenous levels of Bax protein.

DATA:

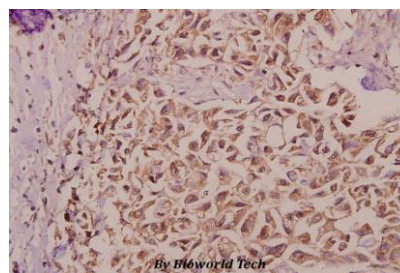


Western blot (WB) analysis of Bax (S4) polyclonal antibody at 1:500 dilution

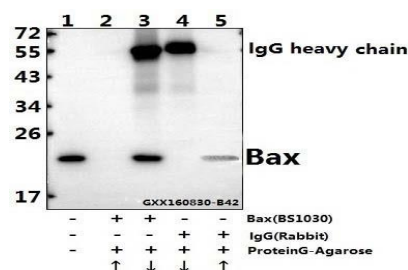
Lane1:A549 whole cell lysate(40ug)

Lane2:K562 whole cell lysate(40ug)

Lane3:MCF-7 whole cell lysate(40ug)



Immunohistochemistry (IHC) analyzes of Bax (S4) pAb in paraffin-embedded human colorectal carcinoma tissue at 1:50.



Immunoprecipitation of A549 cell lysates using Bax (S4) pAb (Sepharose Bead Conjugate)#BD0048 (lane 2 and lane 3) and Nonspecific IgG Control (Sepharose Bead Conjugate)#BD0048 (lane 4 and lane 5). Lane 1 is 30% input. The western blot was probed using Bax (S4) pAb #BS1030.

Note:

For research use only, not for use in diagnostic procedure.

Bioworld Technology, Inc.

Add: 1660 South Highway 100, Suite 500 St. Louis Park, MN 55416, USA.

Email: info@bioworld.com

Tel: 6123263284

Fax: 6122933841

Bioworld technology, co. Ltd.

Add: No 9, weidi road Qixia District Nanjing, 210046, P. R. China.

Email: info@biogot.com

Tel: 0086-025-68037686

Fax: 0086-025-68035151



PRODUCT DATA SHEET

Bioworld Technology, Inc.

Bioworld Technology, Inc.

Add: 1660 South Highway 100, Suite 500 St. Louis Park,
MN 55416, USA.

Email: info@bioworld.com

Tel: 6123263284

Fax: 6122933841

Bioworld technology, co. Ltd.

Add: No 9, weidi road Qixia District Nanjing, 210046,
P. R. China.

Email: info@biogot.com

Tel: 0086-025-68037686

Fax: 0086-025-68035151