

COTL1 polyclonal antibody

Catalog: AP6021

Host: Rabbit

Reactivity: Human, Mouse, Rat

BackGround:

COTL1 (coactosin-like 1), also known as CLP, is a 142 amino acid cytoplasmic and cytoskeletal protein that belongs to the actin-binding proteins ADF family and coactosin subfamily. Widely expressed, COTL1 was first identified in slime mold and is found at highest levels in kidney, placenta, lung and peripheral blood leukocytes, with low levels found in pancreas, liver and brain. COTL1 is one of many proteins that participate in regulation of Actin's cytoskeleton through a calcium dependent mechanism, but has not been shown to have a direct effect on Actin depolymerization. COTL1 contains one ADF-H domain and interacts with 5-LO (5-lipoxygenase), an enzyme that plays a role in the biosynthesis of leukotriene and is expressed in multiple types of leukocytes.

Product:

1 mg/ml in Phosphate buffered saline (PBS) with 0.05% sodium azide, approx. pH 7.3.

Molecular Weight:

~ 16 kDa

Swiss-Prot:

Q14019

Purification&Purity:

The antibody was affinity-purified from rabbit antiserum by affinity-chromatography using epitope-specific immunogen and the purity is > 96% (by SDS-PAGE).

Applications:

WB:1:500~1:1000

IHC:1:50~1:200

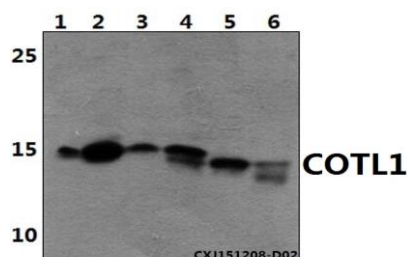
Storage&Stability:

Store at 4 °C short term. Aliquot and store at -20 °C long term. Avoid freeze-thaw cycles.

Specificity:

COTL1 polyclonal antibody detects endogenous levels of COTL1 protein.

DATA:



Western blot (WB) analysis of COTL1 polyclonal antibody at 1:500 dilution

Lane1:HEK293T whole cell lysate(40ug)

Lane2:A549 whole cell lysate(40ug)

Lane3:The lung tissue lysate of Mouse(30ug)

Lane4:The lung tissue lysate of Rat(30ug)

Lane5:The kidney tissue lysate of Mouse(30ug)

Lane6:The kidney tissue lysate of Rat(30ug)

Note:

For research use only, not for use in diagnostic procedure.

Bioworld Technology, Inc.

Add: 1660 South Highway 100, Suite 500 St. Louis Park, MN 55416, USA.

Email: info@bioworld.com

Tel: 6123263284

Fax: 6122933841

Bioworld technology, co. Ltd.

Add: No 9, weidi road Qixia District Nanjing, 210046, P. R. China.

Email: info@biogot.com

Tel: 0086-025-68037686

Fax: 0086-025-68035151