

## CAPG polyclonal antibody

Catalog: AP6017

Host: Rabbit

Reactivity: Human, Mouse, Rat

### BackGround:

Caldesmon, Filamin 1, Nebulin, Plastin, ADF, Gelsolin, CapG, Dematin and Cofilin are differentially expressed Actin-binding proteins. Both muscular (CDh) and non-muscular (CD1) forms of Caldesmon bind to Actin as well as to Calmodulin and Myosin. CDh is expressed predominantly on thin filaments in smooth muscle, whereas CD1 is widely expressed in non-muscle tissues and cells. CapG, also designated Actin-regulatory protein and macrophage-capping protein, is a macrophage-specific protein that reversibly blocks the barbed ends of Actin filaments, but does not sever preformed ones. The interactions of CapG with Actin may be important in the regulation of nuclear and cytoplasmic structures. CapG is a calcium-sensitive DNA-binding protein that plays a role in macrophage function. It is expressed in macrophages and macrophage-like cells and can localize both to the nucleus and the cytoplasm.

### Product:

1 mg/ml in Phosphate buffered saline (PBS) with 0.05% sodium azide, approx. pH 7.2.

### Molecular Weight:

~ 43 kDa

### Swiss-Prot:

P40121

### Purification&Purity:

The antibody was affinity-purified from rabbit antiserum by affinity-chromatography using epitope-specific immunogen and the purity is > 95% (by SDS-PAGE).

### Applications:

WB: 1:500~1:1000

IHC: 1:50~1:200

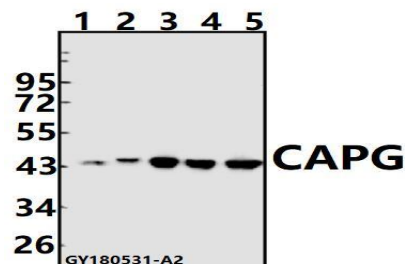
### Storage&Stability:

Store at 4 °C short term. Aliquot and store at -20 °C long term. Avoid freeze-thaw cycles.

### Specificity:

CAPG polyclonal antibody detects endogenous levels of CAPG protein.

### DATA:



Western blot (WB) analysis of CAPG pAb at 1:500 dilution

Lane1: The Lung tissue lysate of Mouse(40ug)

Lane2: The Lung tissue lysate of Rat(40ug)

Lane3: A549 whole cell lysate(40ug)

Lane4: H1792 whole cell lysate(40ug)

Lane5: A375 whole cell lysate(40ug)

### Note:

For research use only, not for use in diagnostic procedure.

### Bioworld Technology, Inc.

Add: 1660 South Highway 100, Suite 500 St. Louis Park, MN 55416, USA.

Email: [info@bioworld.com](mailto:info@bioworld.com)

Tel: 6123263284

Fax: 6122933841

### Bioworld technology, co. Ltd.

Add: No 9, weidi road Qixia District Nanjing, 210046, P. R. China.

Email: [info@biogot.com](mailto:info@biogot.com)

Tel: 0086-025-68037686

Fax: 0086-025-68035151