

VNN1 polyclonal antibody

Catalog: AP6008

Host: Rabbit

Reactivity: Human, Mouse

BackGround:

Hematopoietic precursor cells migrate to the thymus, where they differentiate into mature T lymphocytes. GPI-anchored vanin-1 protein regulates the late adhesion steps of thymus homing of bone marrow precursor cells. Vanin-1 is ubiquitously expressed as a pantetheinase enzyme and catalyzes the hydrolysis of pantetheine for vitamin B5 recycling. The hydrolytic activity of vanin-1 generates the potent antioxidant cysteamine as a metabolite. As a membrane bound pantetheinase, vanin-1 provides the main source of cysteamine under normal physiological conditions. In mice, vanin-1 is expressed specifically in male Sertoli cells of the developing testis, where it aids in cell migration.

Product:

Rabbit IgG, 1mg/ml in PBS with 0.02% sodium azide, 50% glycerol, pH7.2

Molecular Weight:

~ 60 kDa

Swiss-Prot:

O95497

Purification&Purity:

The antibody was affinity-purified from rabbit antiserum by affinity-chromatography using epitope-specific immunogen and the purity is > 95% (by SDS-PAGE).

Applications:

WB: 1:500~1:2000

IF: 1:50~1:100

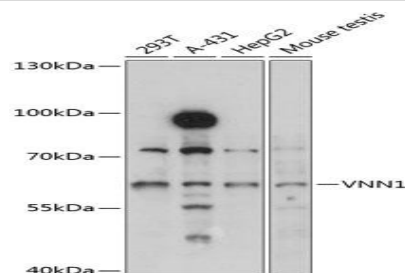
Storage&Stability:

Store at 4 °C short term. Aliquot and store at -20 °C long term. Avoid freeze-thaw cycles.

Specificity:

VNN1 polyclonal antibody detects endogenous levels of VNN1 protein.

DATA:



Western blot analysis of extracts of various cell lines, using VNN1 antibody at 1:3000 dilution.

Note:

For research use only, not for use in diagnostic procedure.

Bioworld Technology, Inc.

Add: 1660 South Highway 100, Suite 500 St. Louis Park, MN 55416, USA.

Email: info@bioworld.com

Tel: 6123263284

Fax: 6122933841

Bioworld technology, co. Ltd.

Add: No 9, weidi road Qixia District Nanjing, 210046, P. R. China.

Email: info@biogot.com

Tel: 0086-025-68037686

Fax: 0086-025-68035151