

Myc-Tag mouse monoclonal antibody

Catalog: AP1026M

Host: Mouse

Reactivity: Transfected

BackGround:

A myc tag is a polypeptide protein tag derived from the c-myc gene product that can be added to a protein using recombinant DNA technology. It can be used for affinity chromatography, then used to separate recombinant, overexpressed protein from wild type protein expressed by the host organism. It can also be used in the isolation of protein complexes with multiple subunits. The peptide sequence of the myc-tag is: N-EQKLISEEDL-C (1202 Da). It can be fused to the C-terminus and the N-terminus of a protein. It is advisable not to fuse the tag directly behind the signal peptide of a secretory protein, since it can interfere with translocation into the secretory pathway.

Product:

Mouse IgG1, 0.5mg/ml in PBS with 0.05% proclin300, 50% glycerol, pH7.2

Molecular Weight:

N/A

Swiss-Prot:

N/A

Purification&Purity:

The antibody was affinity-purified from cell culture supernatant by protein A+G and the purity is > 95% (by SDS-PAGE).

Applications:

WB: 1:20000~1:100000

IHC: 1:50~1:200

IF: 1:200~1:500

IP: 1:50~1:200

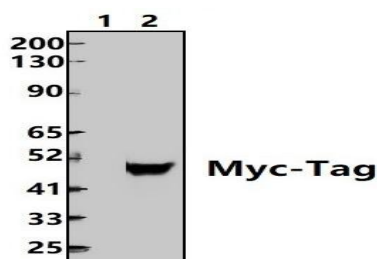
Storage&Stability:

Store at 4°C short term. Aliquot and store at -20°C long term. Avoid freeze-thaw cycles.

Specificity:

Myc-Tag mAb detects over-expressed or recombinant proteins containing the myc epitope tag.

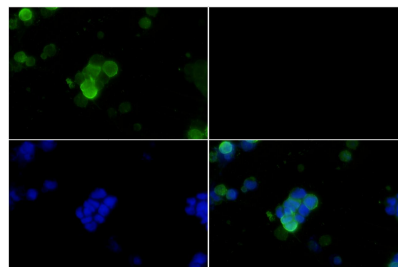
DATA:



Western blot (WB) analysis of Myc-tag mAb at 1:20000 dilution

Lane1: HEK293F whole cell lysate

Lane2: HEK293F whole cell lysate, transfected (M-Myc).



Immunofluorescent analysis of Myc-Tag mAb staining in transfected HEK293F cells.

Note:

For research use only, not for use in diagnostic procedure.

Bioworld Technology, Inc.

Add: 1660 South Highway 100, Suite 500 St. Louis Park, MN 55416, USA.

Email: info@bioworld.com

Tel: 6123263284

Fax: 6122933841

Bioworld technology, co. Ltd.

Add: No 9, weidi road Qixia District Nanjing, 210046, P. R. China.

Email: info@biogot.com

Tel: 0086-025-68037686

Fax: 0086-025-68035151