

## LC3 (T50) polyclonal antibody

Catalog: AP1013

Host: Rabbit

Reactivity: Human, Mouse, Rat

### BackGround:

Two forms of LC3 $\beta$ , the cytosolic LC3-I and the membrane-bound LC3-II, are produced post-translationally. LC3-I is formed by the removal of the C-terminal 22 amino acids from newly synthesized LC3 $\beta$ , followed by the conversion of a fraction of LC3-I into LC3-II. LC3 enhances fibronectin mRNA translation in ductus arteriosus cells through association with 60S ribosomes and binding to an AU-rich element in the 3' untranslated region of fibronectin mRNA. This facilitates sorting of fibronectin mRNA onto rough endoplasmic reticulum and translation. MAP LC3 $\beta$  may also be involved in formation of autophagosomal vacuoles. It is expressed primarily in heart, testis, brain and skeletal muscle.

### Product:

1 mg/ml in Phosphate buffered saline (PBS) with 0.05% sodium azide, approx. pH 7.3.

### Molecular Weight:

~ 15 kDa

### Swiss-Prot:

Q9GZQ8/Q9H492/Q9BXW4

### Purification&Purity:

The antibody was affinity-purified from rabbit antiserum by affinity-chromatography using epitope-specific immunogen and the purity is > 95% (by SDS-PAGE).

### Applications:

WB: 1:500~1:1000

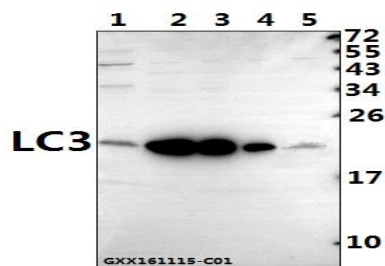
### Storage&Stability:

Store at 4 °C short term. Aliquot and store at -20 °C long term. Avoid freeze-thaw cycles.

### Specificity:

LC3 (T50) polyclonal antibody detects endogenous levels of LC3-I and LC3-II protein.

### DATA:



Western blot (WB) analysis of LC3 (T50) polyclonal antibody at 1:500 dilution

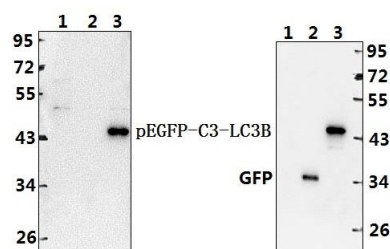
Lane1:BV2 whole cell lysate(40ug)

Lane2:SGC7901 whole cell lysate(40ug)

Lane3:SK-OVCAR3 whole cell lysate(10ug)

Lane4:L02 whole cell lysate(10ug)

Lane5:HEK293T whole cell lysate(40ug)



Western blot (WB) analysis of LC3 (T50) pAb at 1:500 dilution

Lane1:HEK293T whole cell lysate(40ug)

Lane2:HEK293T transfected with pEGFP-C3 whole cell lysate(10ug)

Lane3:HEK293T transfected with pEGFP-C3-LC3B whole cell lysate(10ug)

### Note:

For research use only, not for use in diagnostic procedure.

### Bioworld Technology, Inc.

Add: 1660 South Highway 100, Suite 500 St. Louis Park, MN 55416, USA.

Email: [info@bioworld.com](mailto:info@bioworld.com)

Tel: 6123263284

Fax: 6122933841

### Bioworld technology, co. Ltd.

Add: No 9, weidi road Qixia District Nanjing, 210046, P. R. China.

Email: [info@biogot.com](mailto:info@biogot.com)

Tel: 0086-025-68037686

Fax: 0086-025-68035151