

## CD123 (Q192) polyclonal antibody

Catalog: AP0797

Host: Rabbit

Reactivity: Human

### BackGround:

Interleukin-3, or IL-3, is a pleiotropic cytokine that is primarily secreted by activated T lymphocytes and stimulates the proliferation and differentiation of hematopoietic cells. IL-3 exerts its biological effects through a receptor which consists of a ligand-specific  $\alpha$  subunit (IL-3R $\alpha$ ) and a signal transducing  $\beta$  subunit (IL-3R $\beta$ ) common to the IL-3/IL-5/GM-CSF receptors. The  $\alpha$  subunits are low-affinity ligand-binding proteins while the  $\beta$  subunits do not themselves bind ligand, but are required for high affinity binding by the  $\alpha$  subunits. The mouse IL-3 receptor has two distinct  $\beta$  subunits, one that functions only in IL-3-mediated cell signaling and a second that is shared with IL-5 and GM-CSF. The murine  $\beta$  subunits are 91% homologous at the amino acid level but only 56% homologous to the human  $\beta$  subunit. The carboxy-terminus of the  $\beta$  subunit has been shown to be necessary for activation of the MAP kinase signaling pathway. Although the IL-3 receptor has no intrinsic kinase activity, stimulation with IL-3 leads to tyrosine phosphorylation of the JAK/Tyk 2 family member, JAK2, which in turn activates and causes nuclear translocation of Stat5a and Stat5b.

### Product:

1 mg/ml in Phosphate buffered saline (PBS) with 0.05% sodium azide, approx. pH 7.3.

### Molecular Weight:

~ 43 kDa

### Swiss-Prot:

P26951

### Purification&Purity:

The antibody was affinity-purified from rabbit antiserum by affinity-chromatography using epitope-specific immunogen and the purity is > 96% (by SDS-PAGE).

### Applications:

WB: 1:500~1:1000

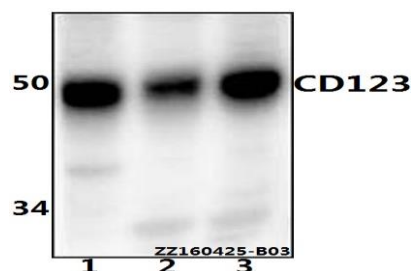
### Storage&Stability:

Store at 4 °C short term. Aliquot and store at -20 °C long term. Avoid freeze-thaw cycles.

### Specificity:

CD123 (Q192) polyclonal antibody detects endogenous levels of CD123 protein.

### DATA:



Western blot (WB) analysis of CD123 (Q192) polyclonal antibody at 1:1000 dilution

Lane1:MCF-7 whole cell lysate(20ug)

Lane2:THP-1 whole cell lysate(20ug)

Lane3:Jurkat whole cell lysate(20ug)

### Note:

For research use only, not for use in diagnostic procedure.

### Bioworld Technology, Inc.

Add: 1660 South Highway 100, Suite 500 St. Louis Park, MN 55416, USA.

Email: [info@bioworld.com](mailto:info@bioworld.com)

Tel: 6123263284

Fax: 6122933841

### Bioworld technology, co. Ltd.

Add: No 9, weidi road Qixia District Nanjing, 210046, P. R. China.

Email: [info@biogot.com](mailto:info@biogot.com)

Tel: 0086-025-68037686

Fax: 0086-025-68035151