

ATG2B (D2078) polyclonal antibody

Catalog: AP0776

Host: Rabbit

Reactivity: Human, Mouse, Rat

BackGround:

ATG2B, required for both autophagosome formation and regulation of lipid droplet morphology and dispersion. Tethers the edge of the isolation membrane (IM) to the endoplasmic reticulum (ER) and mediates direct lipid transfer from ER to IM for IM expansion.

Product:

Rabbit IgG, 1mg/ml in PBS with 0.02% sodium azide, 50% glycerol, pH7.2

Molecular Weight:

~ 300 kDa

Swiss-Prot:

Q96BY7

Purification&Purity:

The antibody was affinity-purified from rabbit antiserum by affinity-chromatography using epitope-specific immunogen and the purity is > 95% (by SDS-PAGE).

Applications:

WB: 1:500~1:1000

IP: 1:50~1:200

IHC: 1:50~1:200

Storage&Stability:

Store at 4 °C short term. Aliquot and store at -20 °C long term. Avoid freeze-thaw cycles.

Specificity:

ATG2B (D2078) polyclonal antibody detects endogenous levels of ATG2B protein.

DATA:



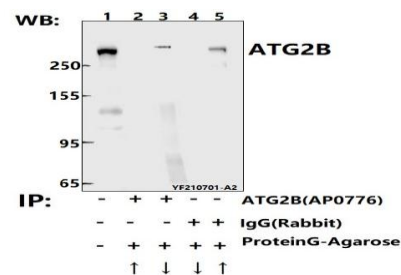
Western blot (WB) analysis of ATG2B (D2078) polyclonal antibody at 1:500 dilution

Lane1:Myla2059 whole cell lysate(40ug)

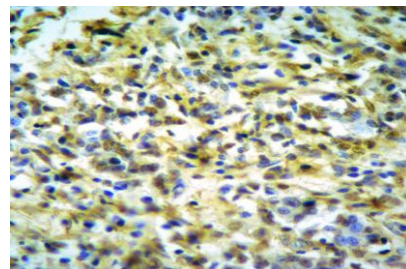
Lane2:PC3 whole cell lysate(40ug)

Lane3:HEK293T whole cell lysate(40ug)

Lane4:C6 whole cell lysate(40ug)



Immunoprecipitation of 293T cell lysates using ATG2B (D2078) pAb (Sepharose Bead Conjugate)#BD0048 (lane 2 and lane 3) and Nonspecific IgG Control (Sepharose Bead Conjugate)#BD0048 (lane 4 and lane 5). Lane 1 is 30% input. The western blot was probed using ATG2B (D2078) pAb #AP0776.



Immunohistochemistry of paraffin-embedded Human Ovarian cancer using ATG2B antibody at dilution of 1:50.

Note:

For research use only, not for use in diagnostic procedure.

Bioworld Technology, Inc.

Add: 1660 South Highway 100, Suite 500 St. Louis Park, MN 55416, USA.

Email: info@bioworld.com

Tel: 6123263284

Fax: 6122933841

Bioworld technology, co. Ltd.

Add: No 9, weidi road Qixia District Nanjing, 210046, P. R. China.

Email: info@biogot.com

Tel: 0086-025-68037686

Fax: 0086-025-68035151