

MAP1LC3C (P77) polyclonal antibody

Catalog: AP0764

Host: Rabbit

Reactivity: Human, Mouse, Rat

BackGround:

MAP1LC3C, also named as LC3C, belongs to the MAP1 LC3 family. It is the human homolog of yeast Atg8 and is involved in the formation of autophagosomal vacuoles, called autophagosomes. LC3C is produced by the proteolytic cleavage after the conserved C-terminal Gly residue. The antibody is specific to the prepeptide of LC3C.

Product:

1 mg/ml in Phosphate buffered saline (PBS) with 0.05% sodium azide, approx. pH 7.3.

Molecular Weight:

~ 17 kDa

Swiss-Prot:

Q9BXW4

Purification&Purity:

The antibody was affinity-purified from rabbit antiserum by affinity-chromatography using epitope-specific immunogen and the purity is > 95% (by SDS-PAGE).

Applications:

WB: 1:500~1:1000

Storage&Stability:

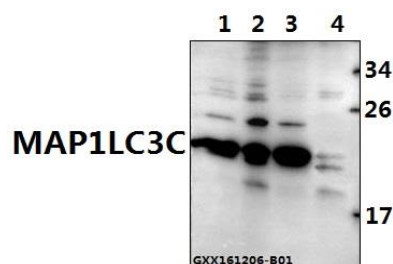
Store at 4 °C short term. Aliquot and store at -20 °C long

term. Avoid freeze-thaw cycles.

Specificity:

MAP1LC3C (P77) polyclonal antibody detects endogenous levels of LC3C protein.

DATA:



Western blot (WB) analysis of MAP1LC3C (P77) polyclonal antibody at 1:500 dilution

Lane1:C6 whole cell lysate(40ug)

Lane2:AML-12 whole cell lysate(40ug)

Lane3:L02 whole cell lysate(40ug)

Lane4:HEK293T whole cell lysate(40ug)

Note:

For research use only, not for use in diagnostic procedure.

Bioworld Technology, Inc.

Add: 1660 South Highway 100, Suite 500 St. Louis Park, MN 55416, USA.

Email: info@bioworld.com

Tel: 6123263284

Fax: 6122933841

Bioworld technology, co. Ltd.

Add: No 9, weidi road Qixia District Nanjing, 210046, P. R. China.

Email: info@biogol.com

Tel: 0086-025-68037686

Fax: 0086-025-68035151