

ATG12 (A98) polyclonal antibody

Catalog: AP0759

Host: Rabbit

Reactivity: Human, Mouse, Rat

Background:

Autophagy is a catabolic process for the autophagosome-lysosomal degradation of bulk cytoplasmic contents. Autophagy is generally activated by conditions of nutrient deprivation but has also been associated with a number of physiological processes including development, differentiation, neurodegeneration, infection, and cancer. The molecular machinery of autophagy was largely discovered in yeast and referred to as autophagy-related (Atg) genes. Formation of the autophagosome involves a ubiquitin-like conjugation system in which Atg12 is covalently bound to Atg5 and targeted to autophagosome vesicles. This conjugation reaction is mediated by the ubiquitin E1-like enzyme Atg7 and the E2-like enzyme Atg10.

Product:

Rabbit IgG, 1mg/ml in PBS with 0.02% sodium azide, 50% glycerol, pH7.2

Molecular Weight:

~ 20, 55 kDa

Swiss-Prot:

O94817

Purification&Purity:

The antibody was affinity-purified from rabbit antiserum by affinity-chromatography using epitope-specific immunogen and the purity is > 95% (by SDS-PAGE).

Applications:

WB: 1:500~1:1000

IHC: 1:50~1:200

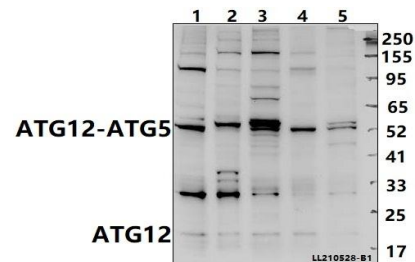
Storage&Stability:

Store at 4 °C short term. Aliquot and store at -20 °C long term. Avoid freeze-thaw cycles.

Specificity:

ATG12 (A98) polyclonal antibody detects endogenous levels of ATG12 protein.

DATA:



Western blot (WB) analysis of ATG12 (A98) polyclonal antibody at 1:500 dilution

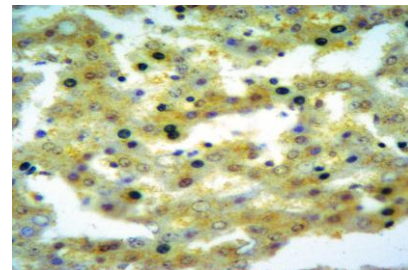
Lane1:SP2/0 whole cell lysate(40ug)

Lane2:C6 whole cell lysate(40ug)

Lane3:PC3 whole cell lysate(40ug)

Lane4:SHSY5Y whole cell lysate(40ug)

Lane5:HCT116 whole cell lysate(40ug)



Immunohistochemistry of paraffin-embedded Human Liver cancer using ATG12 antibody at dilution of 1:50.

Note:

For research use only, not for use in diagnostic procedure.

Bioworld Technology, Inc.

Add: 1660 South Highway 100, Suite 500 St. Louis Park, MN 55416, USA.

Email: info@bioworld.com

Tel: 6123263284

Fax: 6122933841

Bioworld technology, co. Ltd.

Add: No 9, weidi road Qixia District Nanjing, 210046, P. R. China.

Email: info@biogot.com

Tel: 0086-025-68037686

Fax: 0086-025-68035151