

## SLC16A5 (A193) polyclonal antibody

Catalog: AP0702

Host: Rabbit

Reactivity: Human, Mouse, Rat

### BackGround:

Monocarboxylates, such as lactate and pyruvate, play an integral role in cellular metabolism. Lactic acid is produced in large quantities as a result of glycolysis, which provides the majority of ATP to cells under normal physiological conditions. However, accumulation of lactic acid leads to a decrease in intracellular pH and cessation of glycolysis. In order for glycolysis to continue at a high rate, lactic acid must be transported out of the cell. This transport process is carried out by a family of monocarboxylate transporters (MCTs), which function as proton symports and are stereoselective for L-lactate. The MCT family consists of at least eight members, MCT1-8, which contain between 10-12 transmembrane-helical (TM) domains, with the amino and carboxy termini located in the cytoplasm. MCT6 is highly expressed in the kidneys and is thought to have a specificity for bumetanide, a loop diuretic involved in the treatment of edema. The high substrate specificity of MCT6 suggests a possible role in therapeutic drug transport and trafficking across the plasma membrane.

### Product:

1 mg/ml in Phosphate buffered saline (PBS) with 15 mM sodium azide, approx. pH 7.2.

### Molecular Weight:

~ 55 kDa

### Swiss-Prot:

O15375

### Purification&Purity:

The antibody was affinity-purified from rabbit antiserum

by affinity-chromatography using epitope-specific immunogen and the purity is > 95% (by SDS-PAGE).

### Applications:

WB: 1:500~1:1000

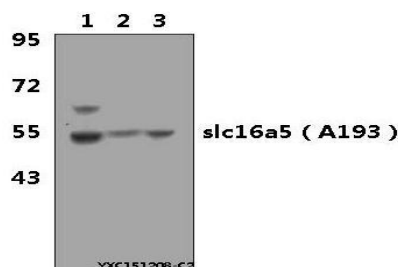
### Storage&Stability:

Store at 4 °C short term. Aliquot and store at -20 °C long term. Avoid freeze-thaw cycles.

### Specificity:

SLC16A5 (A193) polyclonal antibody detects endogenous levels of SLC16A5 protein.

### DATA:



Western blot (WB) analysis of SLC16A5 (A193) polyclonal antibody at 1:500 dilution

Lane1: HEK293T whole cell lysate (40 µg)

Lane2: NIH-3T3 whole cell lysate (40 µg)

Lane3: PC12 whole cell lysate (40 µg)

### Note:

For research use only, not for use in diagnostic procedure.

### Bioworld Technology, Inc.

Add: 1660 South Highway 100, Suite 500 St. Louis Park, MN 55416, USA.

Email: [info@bioworld.com](mailto:info@bioworld.com)

Tel: 6123263284

Fax: 6122933841

### Bioworld technology, co. Ltd.

Add: No 9, weidi road Qixia District Nanjing, 210046, P. R. China.

Email: [info@biogot.com](mailto:info@biogot.com)

Tel: 0086-025-68037686

Fax: 0086-025-68035151