

## IκB-β (T19) polyclonal antibody

Catalog: AP0644

Host: Rabbit

Reactivity: Human,Rat,Mouse

### BackGround:

The NF-κB/Rel transcription factors are present in the cytosol in an inactive state complexed with the inhibitory IκB proteins. Activation occurs via phosphorylation of IκBα at Ser32 and Ser36 followed by proteasome-mediated degradation that results in the release and nuclear translocation of active NF-κB. IκBα phosphorylation and resulting Rel-dependent transcription are activated by a highly diverse group of extracellular signals including inflammatory cytokines, growth factors, and chemokines. Kinases that phosphorylate IκB at these activating sites have been identified. The regulation of IκBβ and IκBε is similar to that of IκBα. However, the phosphorylation and ubiquitin-mediated degradation of these proteins occurs with much slower kinetics. IKK phosphorylation of IκBβ occurs at Ser19 and Ser23, while IκBε can be phosphorylated at Ser18 and Ser22.

### Product:

Rabbit IgG, 1mg/ml in PBS with 0.02% sodium azide, 50% glycerol, pH7.2

### Molecular Weight:

~ 52 kDa

### Swiss-Prot:

Q15653

### Purification&Purity:

The antibody was affinity-purified from rabbit antiserum by affinity-chromatography using epitope-specific immunogen and the purity is > 95% (by SDS-PAGE).

### Applications:

WB: 1:1000~1:2000

IHC: 1:50~1:200

IF: 1:50~1:200

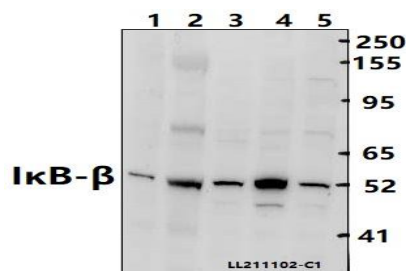
### Storage&Stability:

Store at 4 °C short term. Aliquot and store at -20 °C long term. Avoid freeze-thaw cycles.

### Specificity:

IκB-β (T19) polyclonal antibody detects endogenous levels of IκB-β protein.

### DATA:



Western blot (WB) analysis of IκB-β (T19) polyclonal antibody at 1:2000 dilution

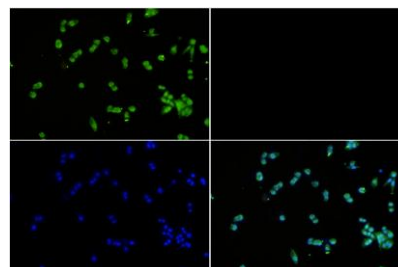
Lane1:The Spleen tissue lysate of Mouse(40ug)

Lane2:The Liver tissue lysate of Rat(40ug)

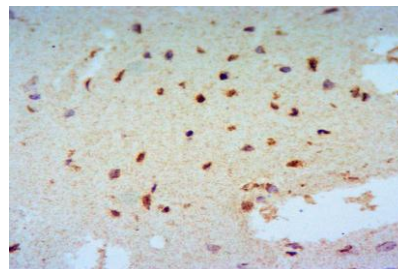
Lane3:MCF-7 whole cell lysate(40ug)

Lane4:K562 whole cell lysate(40ug)

Lane5:A549 whole cell lysate(40ug)



Immunofluorescence analysis of MCF-7 cells using IκB-β antibody at dilution of 1:50.



Immunohistochemistry of paraffin-embedded Rat Brain using IκB-β (T19) antibody at dilution of 1:50.

### Note:

### Bioworld Technology, Inc.

Add: 1660 South Highway 100, Suite 500 St. Louis Park, MN 55416, USA.

Email: [info@bioworld.com](mailto:info@bioworld.com)

Tel: 6123263284

Fax: 6122933841

### Bioworld technology, co. Ltd.

Add: No 9, weidi road Qixia District Nanjing, 210046, P. R. China.

Email: [info@biogot.com](mailto:info@biogot.com)

Tel: 0086-025-68037686

Fax: 0086-025-68035151



## PRODUCT DATA SHEET

Bioworld Technology, Inc.

---

For research use only, not for use in diagnostic procedure.

---

### **Bioworld Technology, Inc.**

Add: 1660 South Highway 100, Suite 500 St. Louis Park,  
MN 55416, USA.

Email: [info@bioworld.com](mailto:info@bioworld.com)

Tel: 6123263284

Fax: 6122933841

### **Bioworld technology, co. Ltd.**

Add: No 9, weidi road Qixia District Nanjing, 210046,  
P. R. China.

Email: [info@biogot.com](mailto:info@biogot.com)

Tel: 0086-025-68037686

Fax: 0086-025-68035151