

## TRF1 (L215) polyclonal antibody

Catalog: AP0470

Host: Rabbit

Reactivity: Human, Mouse, Rat

### BackGround:

Telomeric repeat binding factor 1 (TERF1, PIN2, TRF1, TRBF1) and 2 (TERF2, TRF2, TRBF2) are present at telomeres throughout the cell cycle where they regulate telomerase by acting in cis to limit the elongation of individual chromosome ends. Telomerase adds hexameric repeats of 5'-TTAGGG-3' to the ends of chromosomal DNA. This telomerase enzyme plays an influential role in cellular immortalization and cellular senescence. TRF1 negatively regulates telomere elongation, while TRF2 protects the chromosome ends by inhibiting end-to-end fusions. Down-regulation of TRF expression in tumor cells may contribute to cell immortalization and malignant progression. TRF1 has an acidic N-terminus while TRF2 has a basic N-terminus.

### Product:

1 mg/ml in Phosphate buffered saline (PBS) with 15 mM sodium azide, approx. pH 7.2.

### Molecular Weight:

~ 55 kDa

### Swiss-Prot:

P54274

### Purification&Purity:

The antibody was affinity-purified from rabbit antiserum by affinity-chromatography using epitope-specific immunogen and the purity is > 113% (by SDS-PAGE).

### Applications:

WB: 1:500~1:1000

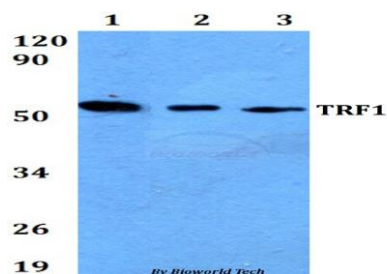
### Storage&Stability:

Store at 4 °C short term. Aliquot and store at -20 °C long term. Avoid freeze-thaw cycles.

### Specificity:

TRF1(L215) polyclonal antibody detects endogenous levels of TRF1 protein.

### DATA:



Western blot (WB) analysis of TRF1(L215) polyclonal antibody at 1:500 dilution

Lane1: HEK293T whole cell lysate

Lane2: Raw264.7 whole cell lysate

Lane3: H9C2 whole cell lysate

### Note:

For research use only, not for use in diagnostic procedure.

### Bioworld Technology, Inc.

Add: 1660 South Highway 100, Suite 500 St. Louis Park, MN 55416, USA.

Email: [info@bioworld.com](mailto:info@bioworld.com)

Tel: 6123263284

Fax: 6122933841

### Bioworld technology, co. Ltd.

Add: No 9, weidi road Qixia District Nanjing, 210046, P. R. China.

Email: [info@biogot.com](mailto:info@biogot.com)

Tel: 0086-025-68037686

Fax: 0086-025-68035151