

p38 (V318) polyclonal antibody

Catalog: AP0424

Host: Rabbit

Reactivity: Human, Mouse, Rat

BackGround:

MAP (mitogen-activated protein) kinases play a significant role in many biological processes, including cell adhesion and spreading, cell differentiation and apoptosis. p38 α , p38 β and p38 γ , also known as MAPK14, MAPK11 and MAPK12, respectively, each contain one protein kinase domain and belong to the MAP kinase family. Expressed in different areas throughout the body with common expression patterns in heart, p38 proteins use magnesium as a cofactor to catalyze the ATP-dependent phosphorylation of target proteins. Via their catalytic activity, p38 α , p38 β and p38 γ are involved in a variety of events throughout the cell, including signal transduction pathways, cytokine production and cell proliferation and differentiation.

Product:

Rabbit IgG, 1mg/ml in PBS with 0.02% sodium azide, 50% glycerol, pH7.2

Molecular Weight:

~ 42 kDa

Swiss-Prot:

Q16539

Purification&Purity:

The antibody was affinity-purified from rabbit antiserum by affinity-chromatography using epitope-specific immunogen and the purity is > 95% (by SDS-PAGE).

Applications:

WB: 1:1000~1:2000

IHC: 1:50~1:200

IF: 1:50~1:200

IP: 1:50~1:200

Storage&Stability:

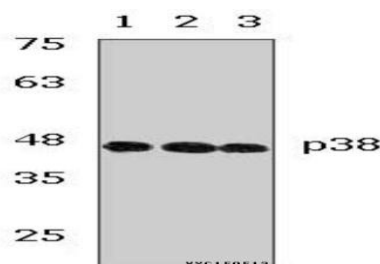
Store at 4 °C short term. Aliquot and store at -20 °C long term. Avoid freeze-thaw cycles.

Specificity:

p38 (V318) polyclonal antibody detects endogenous lev-

els of p38 protein.

DATA:

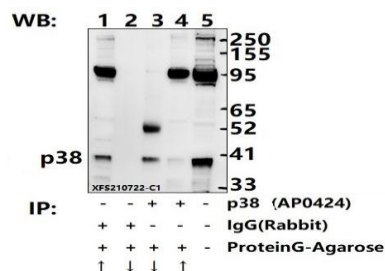


Western blot (WB) analysis of p38 (V318) polyclonal antibody at 1:1000 dilution

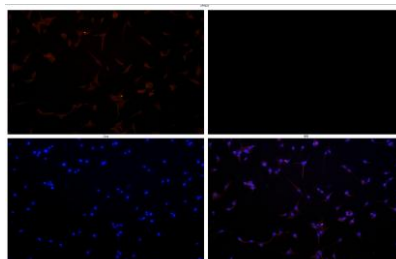
Lane1: HEK293T whole cell lysate (36 µg)

Lane2: NIH-3T3 whole cell lysate (38.8 µg)

Lane3: HepG2 whole cell lysate (36.8 µg)



Immunoprecipitation of U-87MG cell lysates using p38 (V318) pAb (Sephacrose Bead Conjugate) #BD0048 (lane 3 and lane 4) and Nonspecific IgG Control (Sephacrose Bead Conjugate) #BD0048 (lane 1 and lane 2). Lane 5 is 30% input. The western blot was probed using p38 (V318) pAb #AP0424.



Immunofluorescence analysis of U-87MG cells using p38 (V318) antibody at dilution of 1:50.

Bioworld Technology, Inc.

Add: 1660 South Highway 100, Suite 500 St. Louis Park, MN 55416, USA.

Email: info@bioworld.com

Tel: 6123263284

Fax: 6122933841

Bioworld technology, co. Ltd.

Add: No 9, weidi road Qixia District Nanjing, 210046, P. R. China.

Email: info@biogot.com

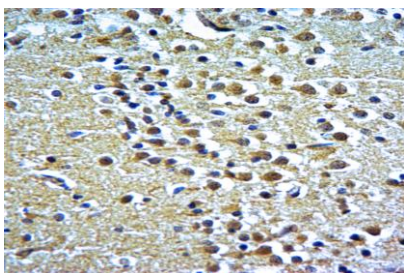
Tel: 0086-025-68037686

Fax: 0086-025-68035151



PRODUCT DATA SHEET

Bioworld Technology, Inc.



Immunohistochemistry of paraffin-embedded Rat Brain using p38 (V318) antibody at dilution of 1:50.

Note:

For research use only, not for use in diagnostic procedure.

Bioworld Technology, Inc.

Add: 1660 South Highway 100, Suite 500 St. Louis Park, MN 55416, USA.

Email: info@bioworld.com

Tel: 6123263284

Fax: 6122933841

Bioworld technology, co. Ltd.

Add: No 9, weidi road Qixia District Nanjing, 210046, P. R. China.

Email: info@biogot.com

Tel: 0086-025-68037686

Fax: 0086-025-68035151