

PKC δ (phospho-T505) polyclonal antibody

Catalog: AP0291

Host: Rabbit

Reactivity: Human, Mouse, Rat

Background:

Protein Kinase C delta (PKC delta) is a 78 kDa member of the novel group (nPKCs: sensitive to diacylglycerol, phosphatidylserine, and phorbol esters) of the PKC family of serine/threonine kinases that are involved in a wide range of physiological processes including mitogenesis, cell survival and transcriptional regulation. PKC delta is an ubiquitously expressed PKC isozyme that has been implicated in the regulation of multiple cellular processes including cell cycle progression and apoptosis. Auto-phosphorylation of serine 664 (serine 662 in mouse and rat) contributes to PKC delta activity. Serum dependent phosphorylation of serine 664 is mediated by mTOR pathway, is protected from dephosphorylation by phosphorylated threonine 505 in the activation loop, and is implicated in prolactin signaling.

Product:

Rabbit IgG, 1mg/ml in PBS with 0.02% sodium azide, 50% glycerol, pH7.2

Molecular Weight:

~ 80 kDa

Swiss-Prot:

Q05655

Purification&Purity:

The antibody was affinity-purified from rabbit antiserum by affinity-chromatography using epitope-specific immunogen and the purity is > 97% (by SDS-PAGE).

Applications:

WB: 1:500~1:1000

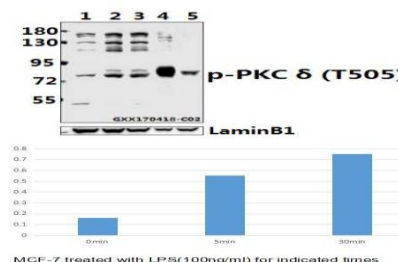
Storage&Stability:

Store at 4 °C short term. Aliquot and store at -20 °C long term. Avoid freeze-thaw cycles.

Specificity:

p-PKC δ (T505) polyclonal antibody detects endogenous levels of PKC δ protein only when phosphorylated at Thr505.

DATA:



Western blot (WB) analysis of PKC δ (phospho-T505) polyclonal antibody at 1:500 dilution

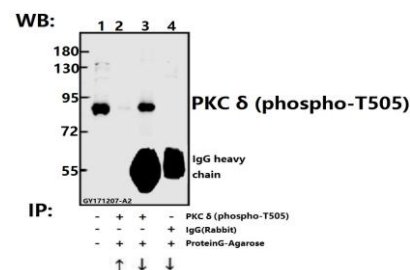
Lane1:MCF-7 whole cell lysate

Lane2:MCF-7 treated with LPS(100ng/ml) for 5 minutes whole cell lysate

Lane3:MCF-7 treated with LPS(100ng/ml) for 30 minutes whole cell lysate

Lane4:BV2 whole cell lysate(40ug)

Lane5:PC12 whole cell lysate(40ug)



Immunoprecipitation of L02 cell lysate using PKC δ (phospho-T505) pAb (Sephacrose Bead Conjugate) #BD0048(lane 2 and lane 3) and Nonspecific IgG Control (Sephacrose Bead Conjugate)#BD0047 (lane 4) .Lane 1 is 30% input. The western blot was probed using SHP-2 (E574) pAb #AP0291. “ \uparrow ” (supernatant) ; “ \downarrow ” (deposition)

Note:

For research use only, not for use in diagnostic procedure.

Bioworld Technology, Inc.

Add: 1660 South Highway 100, Suite 500 St. Louis Park, MN 55416, USA.

Email: info@bioworld.com

Tel: 6123263284

Fax: 6122933841

Bioworld technology, co. Ltd.

Add: No 9, weidi road Qixia District Nanjing, 210046, P. R. China.

Email: info@biogot.com

Tel: 0086-025-68037686

Fax: 0086-025-68035151



PRODUCT DATA SHEET

Bioworld Biotech Co., Ltd

Bioworld Technology, Inc.

Add: 1660 South Highway 100, Suite 500 St. Louis Park,
MN 55416, USA.

Email: info@bioworld.com

Tel: 6123263284

Fax: 6122933841

Bioworld technology, co. Ltd.

Add: No 9, weidi road Qixia District Nanjing, 210046,
P. R. China.

Email: info@biogot.com

Tel: 0086-025-68037686

Fax: 0086-025-68035151